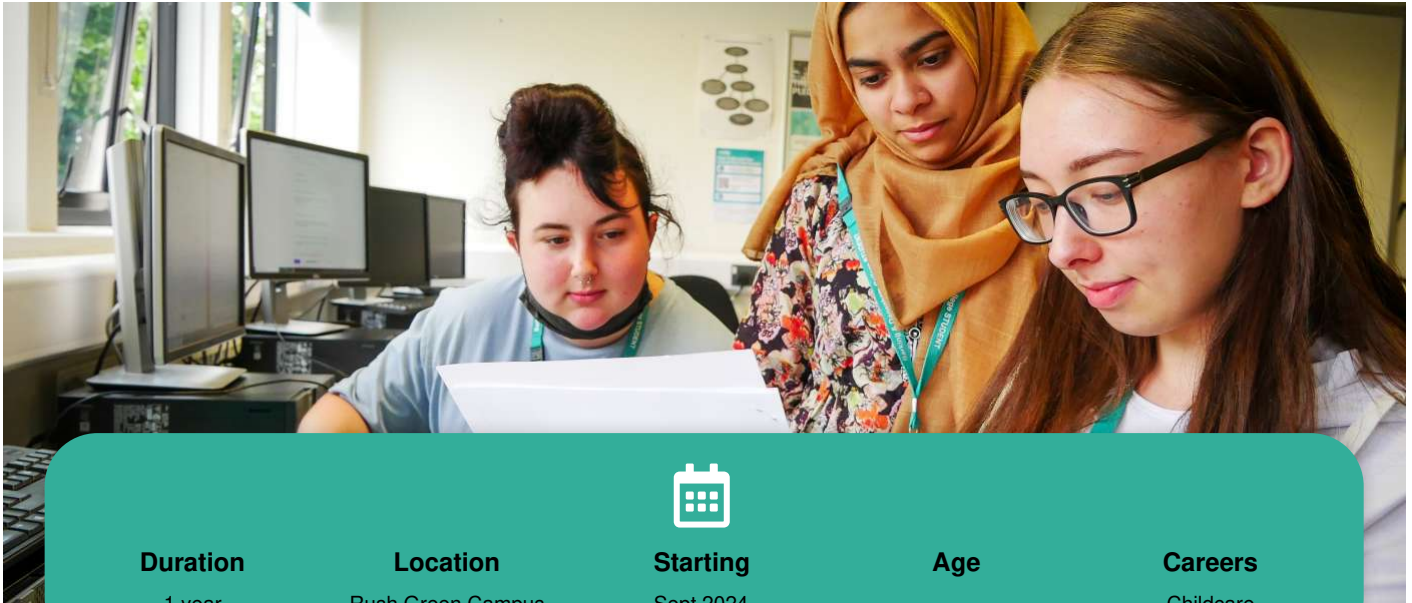


Level 2

Working with Children in Early Years & Primary Settings

NCFE/CACHE Certificate

**Duration**

1 year

Location

Rush Green Campus

Starting

Sept 2024

Age**Careers**

Childcare

Course fees per year

Contact us to discuss what Financial support is available.

Overview

This course is a great option for those looking to work in a nursery or primary school.

On this course you will develop your knowledge of child development and the expectations of childcare practitioners in a nursery or primary setting. You'll also improve your understanding of the practices and theories related to play and early years education, as well as learn more about the early years foundation stage (EYFS) framework and national curriculum.

Alongside this, you'll develop your communication skills, interpersonal skills and empathy, which are all key to progress either to further study or into a job where you'll work closely with young people and their parents or carers.

What you'll learn

You will develop the knowledge required to work in early years or primary settings, including:

- Child development
- Learning about play
- Theories of early years and education
- Safeguarding
- Health and safety

- Equality and diversity

Assessments / Exams

You will be assessed by coursework, portfolio and group work.

Entry requirements

You will need to have GCSE Maths, English Language and two additional subjects at grade 3 (D) or above.

As part of the application process you will also be asked to explain why you want to study this course, so that we can ensure any course offer made aligns to your career goals.

What this course leads to

On successful completion of this course, you will be awarded a Level 2 Certificate.

You could then progress to the Level 3 in Early Years Education, to a Level 3 T Level in Childcare and Education, an Apprenticeship, or into employment in a nursery or primary setting.

Visit this course on our website: <https://barkingdagenhamcollege.ac.uk/find/courses/0000011549>

For further information please contact the college: <https://barkingdagenhamcollege.ac.uk/contact>