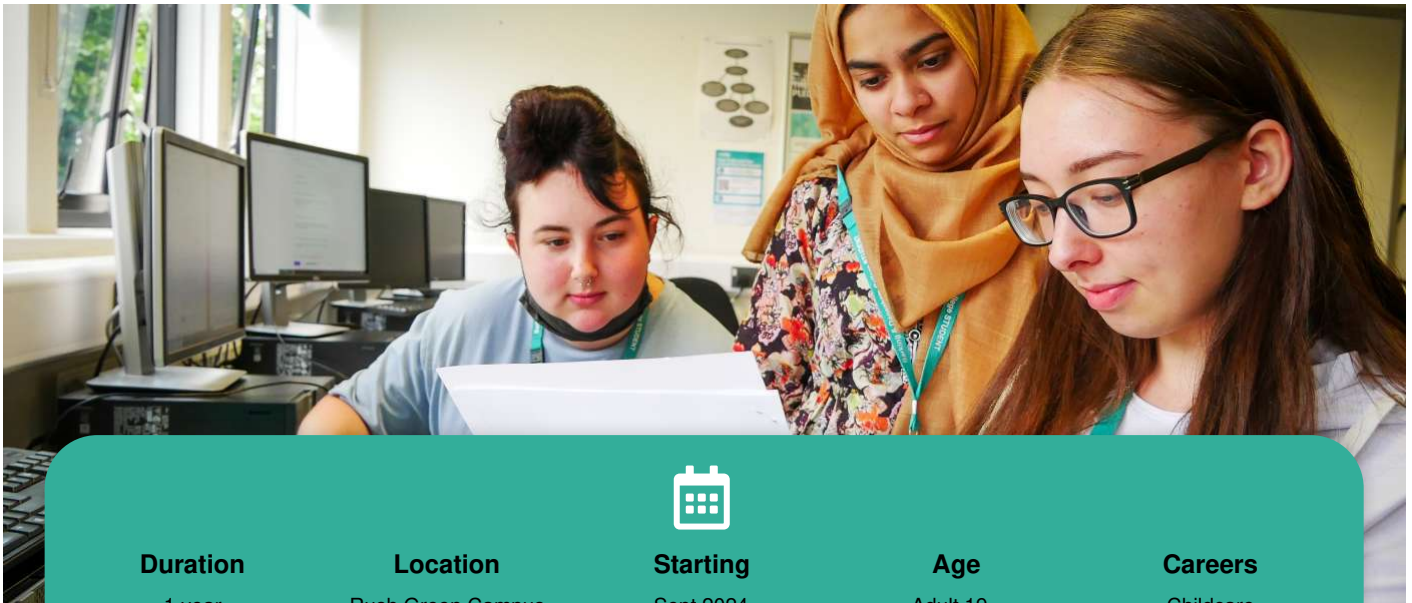


Level 2

# NCFE/CACHE Introduction to Early Years Education & Care

NCFE/CACHE Certificate

**Duration**

1 year

**Location**

Rush Green Campus

**Starting**

Sept 2024

**Age**

Adult 19+

**Careers**

Childcare

## Course fees per year

ADULT 19+

**£966**

The above fees include tuition and exam fees.  
Contact us to discuss what Financial support is available.

## Overview

A Level 2 certificate will mean you're qualified to work with children, so completing this course will give you the option of continuing your studies or finding a job.

## What you'll learn

You'll learn how to work with children between birth and 11 years of age. The course will cover play, curriculum, healthy living, development, child safety plus much more.

## Assessments / Exams

There are 100 hours of placement time over 35 weeks as part of the course.

You'll have a personal assessor assigned to you to ensure your competency. You'll also get a progress coach to support

you through the course.

## A typical week

You will spend 2 days on a placement and 3 days in college.

## Entry requirements

You'll need to have GCSEs in English & maths at grade 2/3 (D/E) or above.

If you're 19+, you will need to have secured a work placement with children aged 5 or under (reception class or below) before enrolling on this course. Please bring a confirmation letter from your placement with you when you enrol.

Entry to this course is dependent on the outcome of a Disclosing and Barring Service (DBS) check.

## Our teaching staff

All of our teaching staff have vast industry experience within early years and school environments.

## Links with employers

Your secured work placement with children aged 5 or under, will improve your skills and prospects for further study and employment.

## What this course leads to

Successfully completing this course means you can move on to a Level 3 qualification, if you pass the course with a distinction.

Visit this course on our website: <https://barkingdagenhamcollege.ac.uk/find/courses/0000010967>

For further information please contact the college: <https://barkingdagenhamcollege.ac.uk/contact>