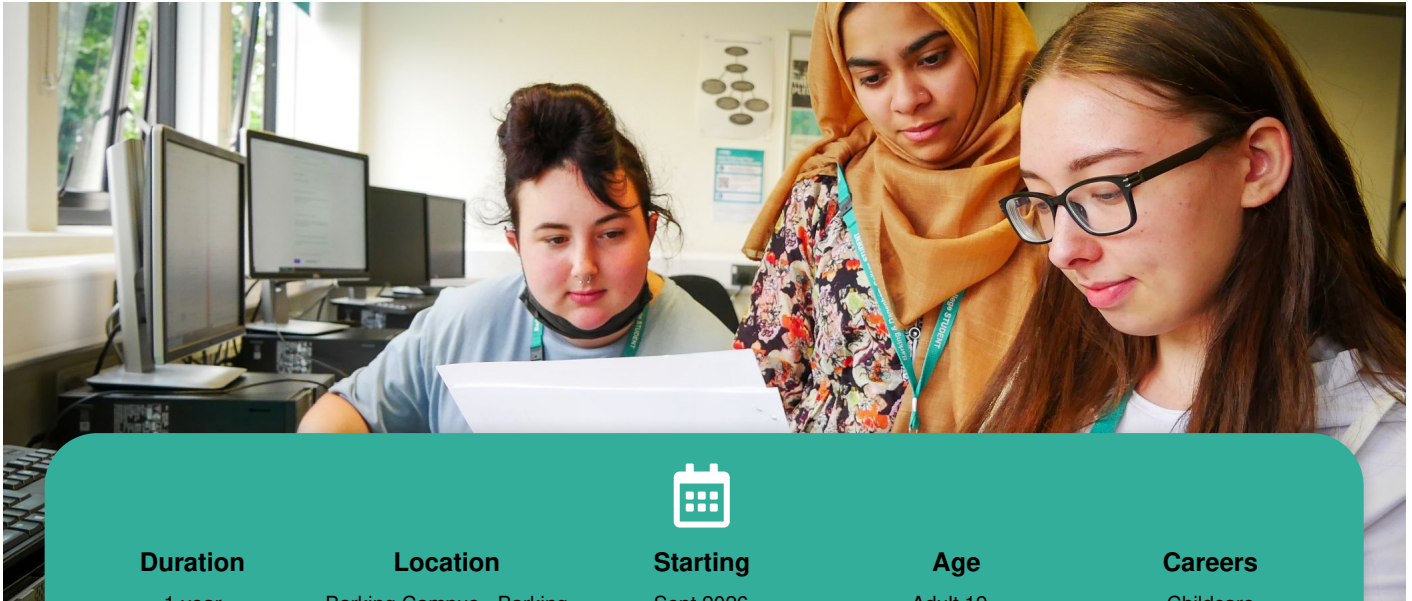


Level 2

# NCFE/CACHE Supporting Teaching and Learning

NCFE/CACHE Certificate

**Duration**

1 year

**Location**Barking Campus - Barking  
Learning Centre  
Rush Green Campus**Starting**Sept 2026  
Jan 2027**Age**

Adult 19+

**Careers**Childcare  
Teaching Assistant**Course fees per year**

ADULT 19+

**£658 - £801**

The above fees include tuition and exam fees.  
Contact us to discuss what Financial support is available.

## Overview

This course is ideal if you're thinking about a career as a teaching assistant.

## What you'll learn

You'll learn how to work directly with children and young people, alongside a teacher, in school or college environments.

This will involve studying children and young people's development, and their behaviour and communication.

## Assessments / Exams

You will be formally assessed by an allocated assessor in your work placement.

## A typical week

You will spend 2.5 hours in college and a compulsory minimum of 12 hours in a work environment.

## Entry requirements

You'll need Level 1 English & maths for this course, or have completed the [Level 1 Diploma in Caring for Children](#).

There will also be an interview to ensure suitability.

If you're 19+, you will need to have secured a work placement with children in Year 1 or above, before enrolling on this course. Please bring a confirmation letter from your placement with you when you enrol.

Entry to this course is dependent on the outcome of a Disclosing and Barring Service (DBS) check.

## Our teaching staff

All of our teaching staff have vast industry experience within early years and schools environments.

## Links with employers

As part of the course, you'll spend a minimum of 420 hours in your secured work placement, in a school setting with children from Year 1 and above.

This kind of work experience will be a huge advantage when you look for jobs or courses for further study.

## What this course leads to

Successfully completing this course leads on to Level 3 Supporting Teaching & Learning.

You could also choose to find employment now that you're qualified to work with children in a school setting.

Visit this course on our website: <https://barkingdagenhamcollege.ac.uk/find/courses/0000005664>

For further information please contact the college: <https://barkingdagenhamcollege.ac.uk/contact>