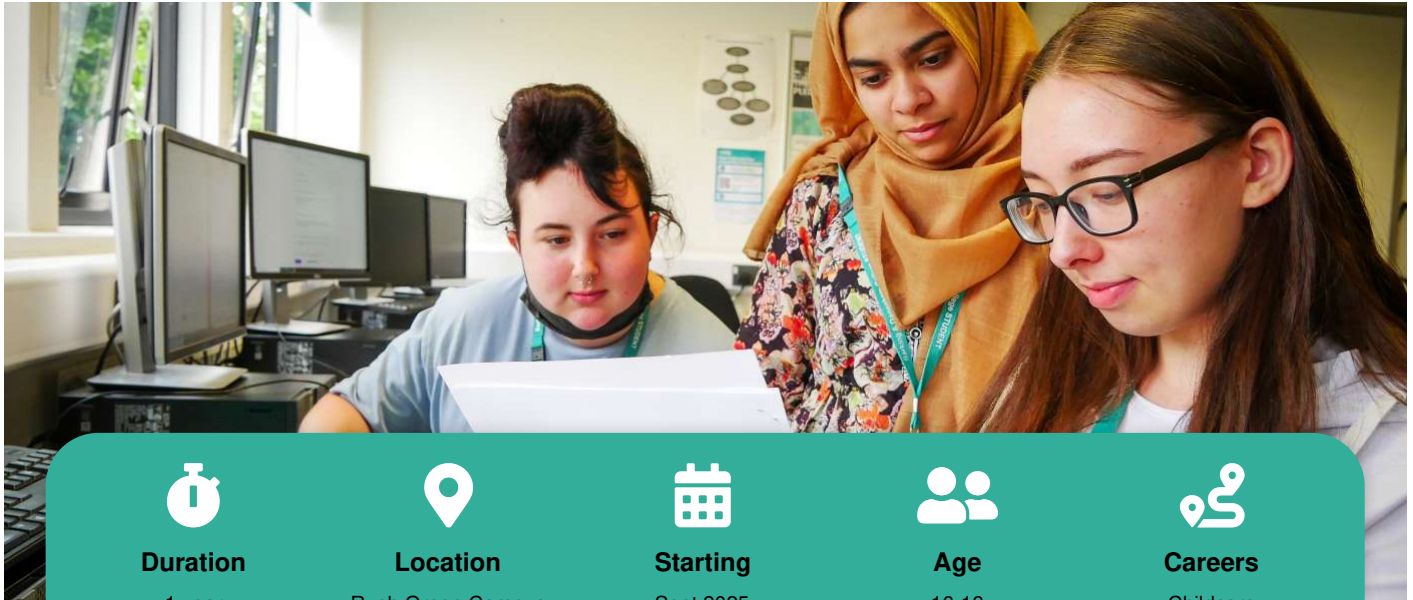


Level 1

# NCFE/CACHE Caring for Children

NCFE/CACHE Diploma



**Duration**  
1 year



**Location**  
Rush Green Campus



**Starting**  
Sept 2025



**Age**  
16-18



**Careers**  
Childcare

## Course fees per year

AGE 16-18

**FREE**

Contact us to discuss what Financial support is available.

## Overview

If you're interested in a career as a Nursery Practitioner or Classroom Assistant this course will give you the perfect start.

To work with children you need at least a Level 2 qualification, so this course is perfect preparation to go on to study at the next level.

You'll benefit from excellent teaching resources and a real work environment.

## What you'll learn

You'll learn how to work with children between birth and 5 years of age. The course will cover play, healthy living, development, and child safety.

## Assessments / Exams

You'll be monitored and mentored as the course progresses.

There are also 13 assignments to be completed for the full Diploma. There are no exams on this course.

## Entry requirements

You will need to have GCSE Maths, English Language and two additional subjects at grade 2 (E) or above.

As part of the application process you will also be asked to explain why you want to study this course, so that we can ensure any course offer made aligns to your career goals.

## Our teaching staff

All of our teaching staff have vast industry experience within early years and schools environments.

## Links with employers

This course offers an optional placement of up to 10 days, if you wish to progress to the Level 2 course.

Any work experience you do will improve your skills and prospects for further study and employment.

## What this course leads to

This course leads on to a Level 2 Childcare programme, which will enable you to work with children.

Visit this course on our website: <https://barkingdagenhamcollege.ac.uk/find/courses/0000002720>

For further information please contact the college: <https://barkingdagenhamcollege.ac.uk/contact>